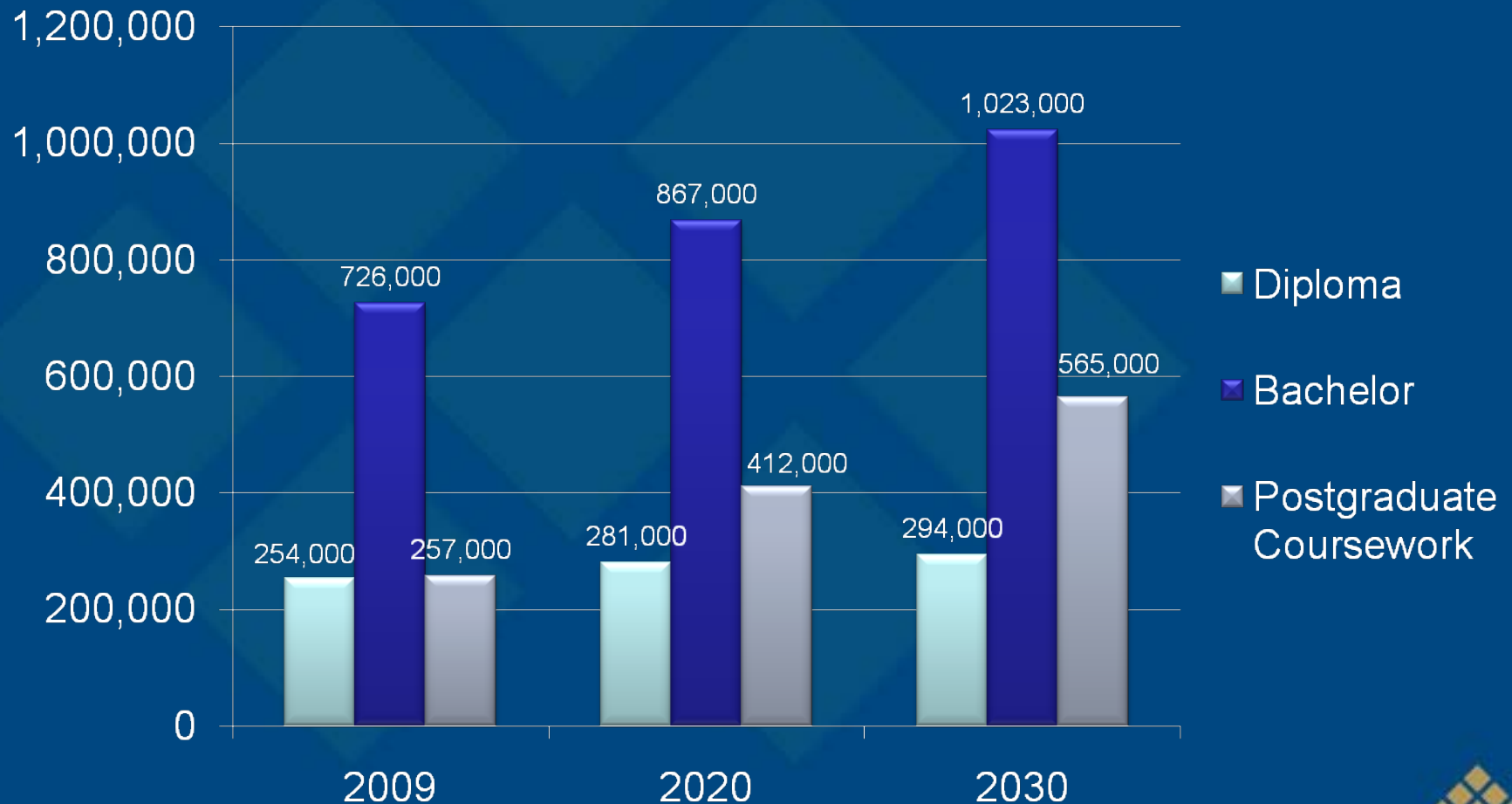


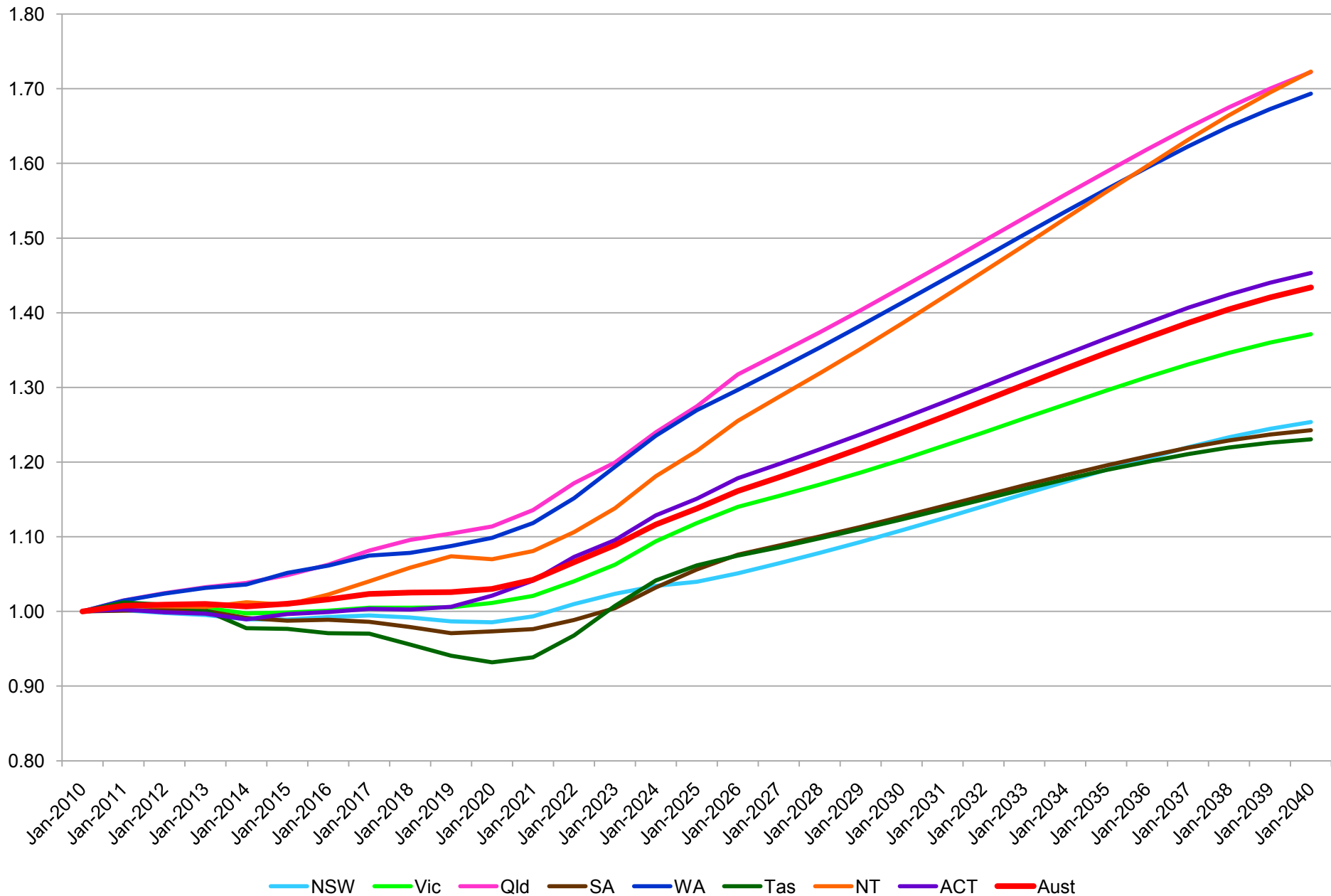
Australian Education 2008

	Student Enrolment (FTE)	Student/ Teacher Ratio	Funding Per Student (FTE)	
			Government \$	Other \$
Primary				
Public	1,377,193	15.6	11,557	
Private	598,115	16.4	5,810	0 - 11,871
Secondary				
Public	896,060	12.3	14,306	
Private	573,106	11.6	5,810	5,040 – 28,000
VET				
Public	567,400		7,260	
Private	735,800			
Higher Education				
Public (CSP)	440,931	20.3	8,711	0 - 8,677
Private (Fee)	273,765			4,249 – 29,600

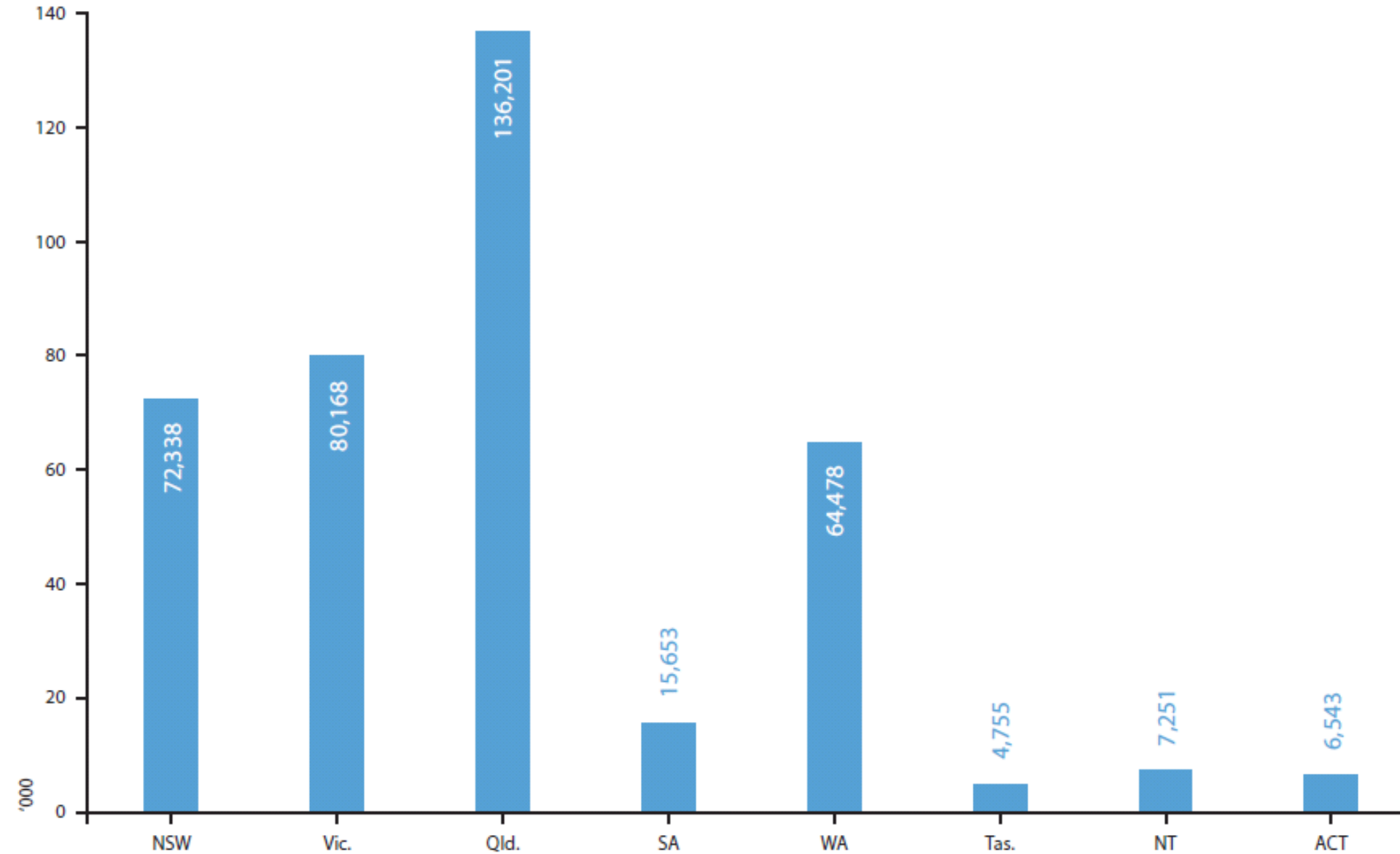
Estimated Future Domestic Demand for Higher Education



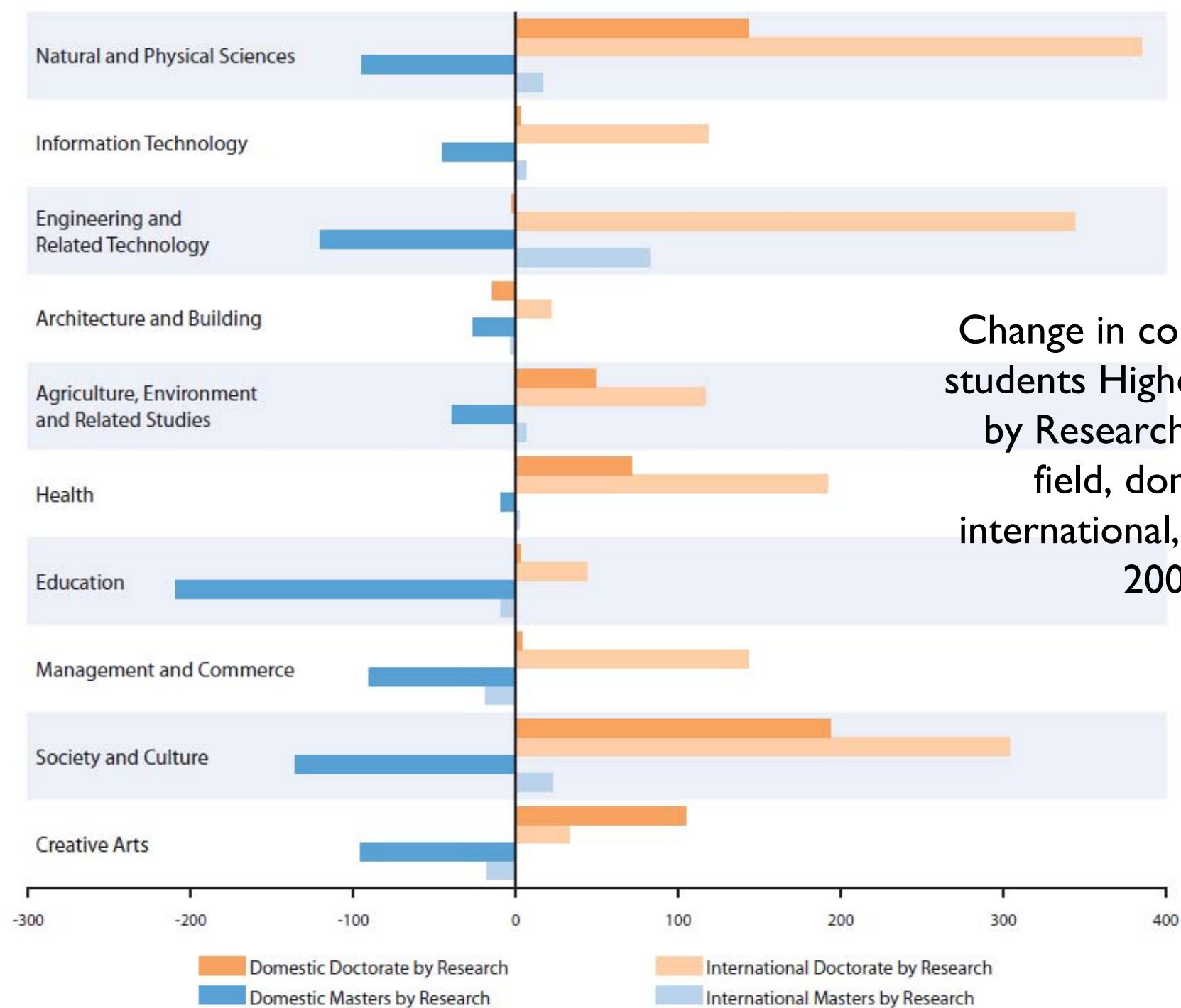
Projected growth for 16-18 year olds



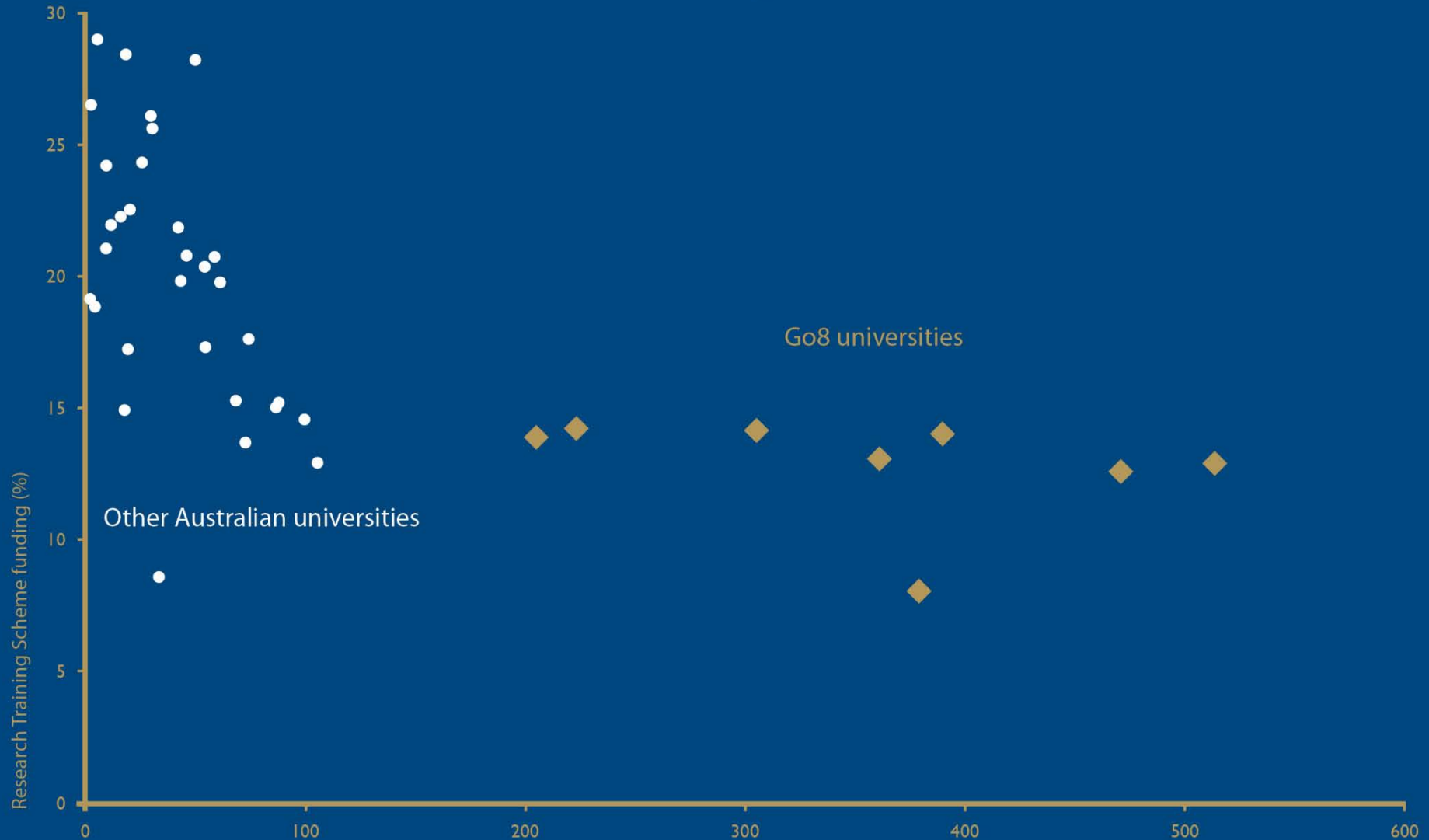
Absolute growth in population aged 16-18 years by State and Territory, 2010 to 2040



Change in commencing students Higher Degree by Research by broad field, domestic and international, Australia, 2001 to 2008



Research Training Scheme funding as a percentage of total Australian university income, 2008



Source: Finance 2008, Financial Reports of Higher Education Providers (DEEWR); 2008 Research Income and Publications Data by Sub Category (DIISR); Research Block Funding Timeseries (2002–2010) (DEEWR)

Total research income (\$'000,000)